

The Educational Foundation
JUMONJI GAKUEN



十文字学園女子大学

JUMONJI UNIVERSITY



十文字中学校・十文字高等学校

JUMONJI JUNIOR & SENIOR HIGH SCHOOL



十文字女子大附属幼稚園

JUMONJI KINDERGARTEN

Contents

- 02 School Philosophy/School Song/
Successive Chairpersons of the
Board of Directors/History
- 04 University/Junior College/
Graduate School/Intensive
Japanese Language Program
- 06 Junior & Senior High School
- 08 Kindergarten/Intensive
Japanese Language Program/
International Exchange/
Language Studies
- 10 About Jumonji Gakuen/
Club Activities

● Successive Chairpersons of the Board of Directors

First Chairperson

Koto Jumonji
March 1951 - May 1955

Second Chairperson

Yoshiko Jumonji
June 1955 - May 1987

Third Chairperson

Kazuo Jumonji
May 1987 -



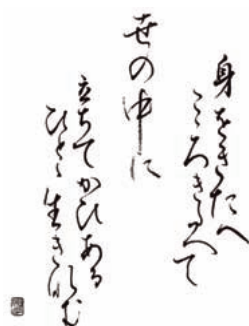
Kazuo Jumonji

Walking with women, creating a new age

In 2012, Jumonji Gakuen celebrated the 90th anniversary of its founding.

We have been committed to creating desirable environments suited to the times in terms of education, studies, lifestyle, career options, etc. in order to meet wise women's aspiration for self-reliance.

● School Philosophy, School Song



Live as a person with purpose
of contributing to the society,
training ourselves academically
and physically.



Founder, Koto Jumonji

In 1922, Jumonji Gakuen was founded in Sugamo, Tokyo by Koto Jumonji with strong desire to establish a private school so as to allow as many women as possible to receive education, in cooperation with friends from Tokyo Women's Higher Normal School.

Our school philosophy is reflected in the words of our school song, "Live as a person with purpose to be of help for the society, training ourselves mentally and physically."

The spirit of founders in hope of fostering women who can independently do good for the society with their own purposes in life has been handed down through generations to the present time with this school song.

While maintaining the spirit and lifestyle to "keep training oneself", we will aim to achieve Jumonji's unique education of women, flexibly responding to changes in the society.

● History (1922 - 2013)

1922

Established Bunka Girl's High School
(Founders: Koto Jumonji, Michie Tono, Yasu Shiba)

【Sugamo, Toshima-ku, Tokyo】
Adding Jikyo-Jutsu exercise to daily routine

1930

Establishment of Bunka Girl's High School
Kindergarten was approved
【Sugamo, Toshima-ku, Tokyo】

1937

School Name changed to Jumonji Girl's High School

1947

Established Jumonji Junior High School
【Sugamo, Toshima-ku, Tokyo】

1948

Established Jumonji Senior High School
【Sugamo, Toshima-ku, Tokyo】

1951

The School organizationally changed to
Educational Foundation Jumonji Gakuen

1960

Established Dormitory House Kawaguchiko,
Educational Foundation Jumonji Gakuen

1966

Established Jumonji Junior College (Home Economics Course,
Early Childhood Care and Education Course)
【Niiza-shi, Saitama】

1968

Established Jumonji Junior College Kindergarten
【Niiza-shi, Saitama】

1971

Established Mountain Lodge Yunomaru,
Educational Foundation Jumonji Gakuen

1973

Established the Departments (Department of Primary
Education, Japanese Language and Literature Major of
Department of Literature, English Language and
Literature Major of Department of Literature), Junior College

1974

Separated the Department of Home Economics into Household
Arts Major and Food and Nutrition Major, Junior College

1976

Established the Major Courses (Japanese Literature,
English Literature, Household Arts, Food and Nutrition,
Early Childhood Care and Education and Primary Education),
Junior College

1989

Established Department of Liberal Arts, Junior College

1991

Established Liberal Arts Major Course, Junior College

1992

Household Arts Major of Department of Home Economics renamed
Life Studies Major of Department of Home Economics, Junior College

1996

Established Jumonji University (Department of Social and
Information Science, Faculty of Social and Information Science)
【Niiza-shi, Saitama】

2000

Established Faculty of Social and Information Science
(Department of Communication Studies), University
Established Intensive Japanese Language Program, University

2002

Established Faculty of Human Life (Department of Early Childhood
Care and Education, Department of Food and Nutrition), University
Japanese Name of Jumonji Junior College changed from Jumonji
Gakuen Joshi Tanki Daigaku to Jumonji Gakuen Joshi Tanki
Daigaku-bu

2003

Jumonji Junior College Kindergarten renamed Jumonji Kindergarten
Memorial Hall completed

2004

Established Department of Human Welfare and Department of
Human Developmental Psychology, Faculty of Human Life, University

2007

Set up Super Selection Class for Junior High School
Changed the name of Department of Early Childhood Care and
Education, Faculty of Human Life to Department of Child and Early
Childhood Care and Education, concurrently, set up the two Majors
(Early Childhood Care and Education Major and Elementary
Education Major)

2010

Established Graduate School (Department of Human Life Sciences, Food
and Nutritional Sciences Major)
【Niiza-shi, Saitama】

2011

Renewed Faculty of Human Life, University

2012

Started construction of new ridge of Junior and Senior High School
(scheduled to be completed in March 31, 2014)
Established Department of Culture and Communication,
Junior College

University/Junior College/Graduate School/ Intensive Japanese Language Program

Faculty of Human Life

Faculty of Human Life was reborn as a faculty to develop extra literacy in addition to special skills for each department.

Department/Enrolment limit

**Department of Early
Childhood Care and Education**
150

Aim to develop human resources for childcare who are mentally and physically healthy and respect children's independence and self-motivation.

Qualification to aim at

First-Class Certificate for Kindergarten Teachers

**Department of Elementary
Education**
50

Foster elementary school teachers who can teach children in accordance with their developmental stage.

First-Class Certificate for Elementary School Teachers
First-Class Certificate for Special Support School Teachers

**Department of Human
Developmental Psychology**
100

Develop necessary knowledge and attitude to build deeper relationships with people of diverse generations through learning psychology.

First-Class Certificate for Nursing Teachers
Certified Psychologist
Peer Helper

**Department of Food and
Nutrition**
120

Foster managerial dietitians and nutritionists who can provide appropriate advice with the ability to comprehensively evaluate and judge health and nutrition conditions.

Registered Dietitian
(Qualification to take the national exam)
Nutritionists

**Department of Human
Welfare**
60

Social Welfare Course

Develop human resources to be engaged in social welfare services, who can provide concrete advice and support for everyday life to users needing various welfare services.

Certified Social Workers
(Qualification to take the national exam)
Social Welfare Officers
(Qualification for appointment)

Care Welfare Course

With accumulated skills and theories for livelihood support, the students master the practical ability to comprehensively support lives of users such as the elder and the disabled, by building deep relationships with them, and understanding their lives and thought.

Certified Care Workers
(Qualification to take the national exam)
Certified Social Workers
(Qualification to take the national exam)

**Department of Career Planning
and Information Studies**
100

Aiming to master diverse abilities to make a living, which surely lead to getting a job, the students comprehensively learn business including IT, computer, accounting, management, and planning.

IT Passport Examination
Advanced Information Processing Engineer
Librarian

**Department of
Media Communication Studies**
100

Fostering communication ability using media, through understanding features of various media, such as mass media, Internet, individual languages and physical expressions.

TOEIC®, Librarian

Junior College

In April 2012, "Department of Literature" of the Junior College changed to "Department of Culture and Communication, which develops human resources who have expressive power to live actively in the modern society, using the wisdom of the previous Department of Literature,

Department/Enrolment limit

**Department of Culture
and Communication**
140

Culture and Design Course
Japanese Language and Literature Course
English Communication Course

Primary feature of the education is learning various subjects to expand students' own world with the aim of acquiring living skills. Living skills mean abilities necessary to flexibly create one's own life, overcoming diverse problems facing people in everyday life.

Qualification to aim at

Librarian, Second-Class Certificate for Junior High School Teachers (Japanese)
Second-Class Certificate for Junior High School Teachers (English)

Graduate School

The Graduate School fosters experts of "Food, Nutrition, and Health".

Graduate School/Major/Enrollment limit

**Graduate School of
Human Life Sciences**
**Food and Nutritional
Sciences Major**
5

With the aim of achieving the school philosophy, Food and Nutritional Sciences Major develops human resources who can create one's path in each active field through multiple and scientific viewpoints, amid the diversification and sophistication of social requirements for experts of "Food, Nutrition, and Health", especially managerial dietitians.

Intensive Japanese Language Program

This Program provides opportunities to master Japanese-language skills to understand lectures at Japanese university and to learn Japanese culture for foreign young people who hope to study at Japanese university.

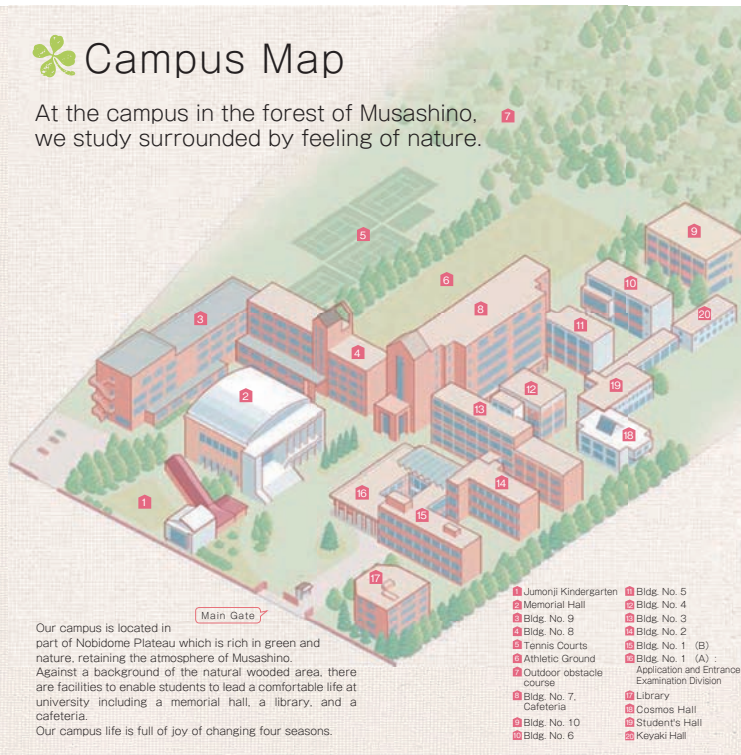
Enrolment limit

80

With students from China and other Asian countries, as well as Sri Lanka and Iran, studying Japanese at Jumonji University, this program has played a significant role of international exchange in the University.

Campus Map

At the campus in the forest of Musashino, we study surrounded by feeling of nature.



President : Kaoru Yokosuka

The junior and senior high school years are the period when young people grow the most. Jumonji Gakuen regards this period as a continuous stage and offers students integrated education and guidance. A wide variety of programs are offered so that students may acquire not only solid basic education but the ability to apply knowledge and creativity. For efficient learning, small classes are organized in some junior and senior high school subjects. Jumonji Gakuen's education is characterized by the encouragement of good language usage and expression as well as improvement of general scholastic ability.

● Educational Policy

Improvement in Academic Ability

We develop student's academic abilities useful for their future career, while fostering willingness to study, abilities to think by oneself, and creativity.

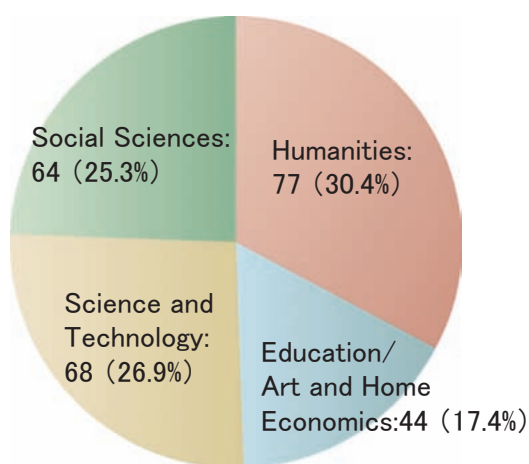
Enrichment Program

We foster women who have a voluntary attitude and desirable character on the basis of diverse information and knowledge obtained through "year-round activities to learn from real experience".

Health Education

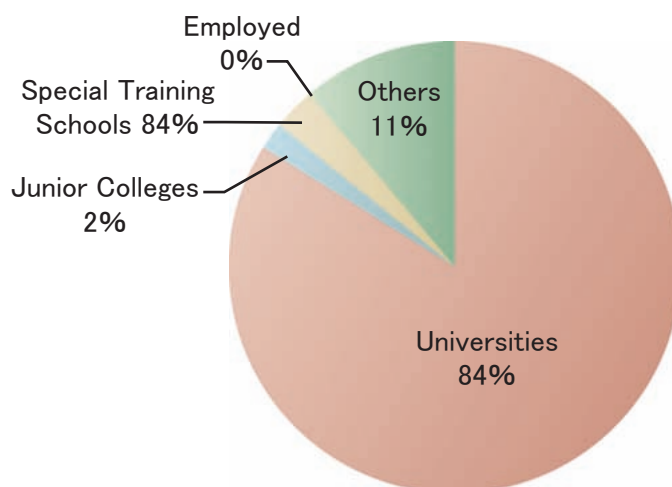
We enable students to establish a regular living practice by fostering health and strong mind through daily "Jikyo-Jutsu exercise" and club activities performed in cooperation with lifetime friends.

● College Entrance Status by Academic Field (Graduates in 2013)



Total: 253

● Courses students chose after graduation (Graduates in 2013)



One in four students matriculated in science and technology.

◎ Campus

New school buildings are scheduled to be completed in March 2014

Planning details:

- newly building a cafeteria (dining room), a swimming pool, a multipurpose hall, a tea-ceremony room, and Japanese rooms for club and extracurricular activities, etc.
- securing ordinary class rooms (for senior high school third-grade)
- improving rooms for makeup classes and training sessions (all-purpose room/interview room) with the increase in sessions after school, etc.



Principal : Hiroko Hashimoto

● Kindergarten

Jumonji Kindergarten was opened as a kindergarten affiliated with Jumonji Junior College in April 1968.

Located in the wide university campus blessed with nature, this small-sized kindergarten is suitable to take care of children who have lived in a small family unit.

In cooperation with the University, the Kindergarten aims to provide better education with special knowledge, as needed, provided by Department of Early Childhood Care and Education, Department of Elementary Education, Department of Food and Nutrition, and Department of Human Developmental Psychology in Faculty of Human Life.



Principal : Yuko Jumonji

●Class composition: 2 classes respectively for 3, 4, and 5-year-old children

●Open: Five days a week (Food service for three days, Boxed lunch for two days) from 9:00 - 14:30

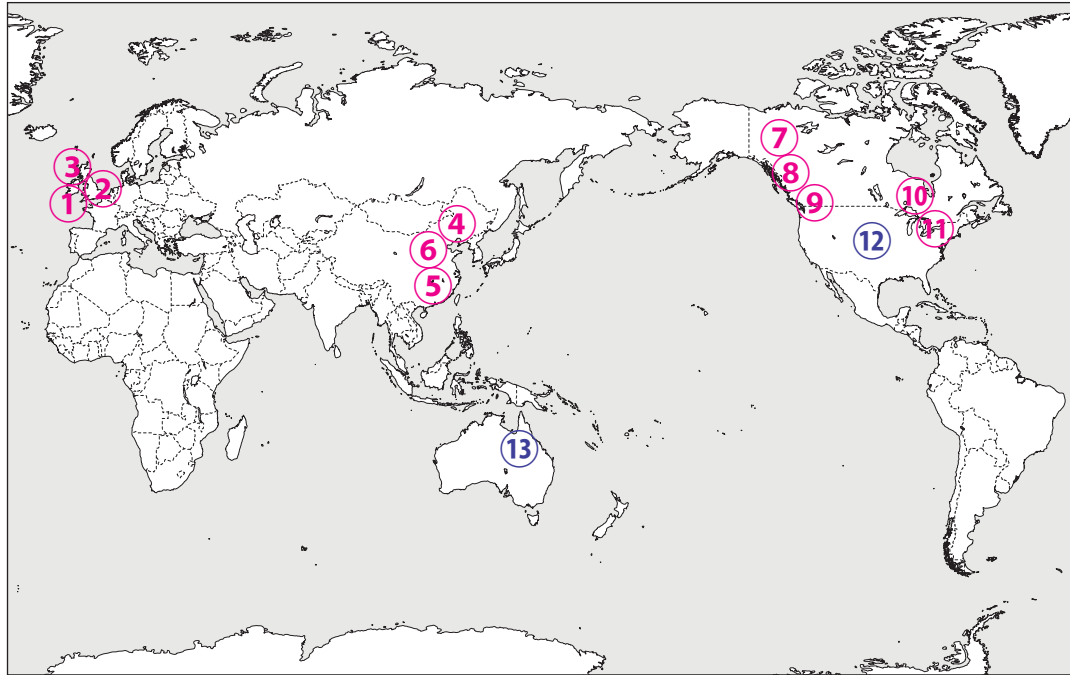


● Intensive Japanese Language Program

Jumonji University offers Intensive Japanese Language Program to foreign young people who want to study at Japanese university, which provides them opportunities to acquire Japanese proficiency so as to understand lectures at Japanese university, as well as learn Japanese culture. With students from China and other Asian countries, as well as Sri Lanka and Iran who entered the University to study Japanese, etc., the Program has played a significant role of international exchange in the University. In summer of 2012, 50 students from four universities and one Japanese-language school in China visited to the University for the purpose of experiencing trial lessons of the Program and exchange with students of Jumonji University. Like this, the Program is a core of Jumonji's international exchange.

In consideration of overseas educational period, we offer applicants opportunities twice a year to start the Program from either the Spring Semester (April) or the Fall Semester (September). (Entrance examination is available in Japan and overseas.)





<University/Junior College>

We provide our students long-term language study programs at sister schools and affiliated schools in America, Canada, U.K. and China.

① De Montfort University (DMU)

Leicestershire, U.K.

② University of East Anglia (UEA)

Norfolk, U.K.

③ University of Stirling (Stirling)

Stirling, Scotland

④ Beijing Language and Culture University

Haidian District, Beijing, China

⑤ Anhui Foreign Languages University

Hefei, Anhui, China

⑥ China Woman's University

Chaoyang District, Beijing, China

⑦ Northern Lights College (NLC)

British Columbia, Canada

⑧ Central Washington University (CWU)

Washington, U.S.A

⑨ Utah Valley University (UVU)

Utah, U.S.A

⑩ Queen's University (QU)

Ontario, Canada

⑪ Trinity Washington University (TU)

Washington D.C., U.S.A

<Junior & Senior High School>

Students participate in English study programs, staying with host families in the following state and city.

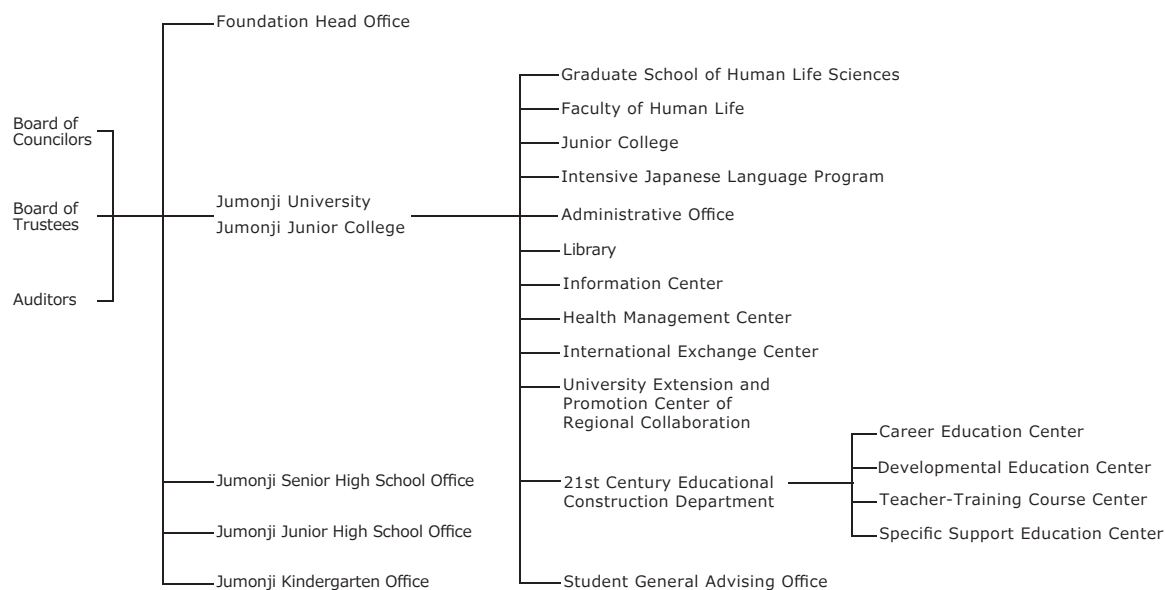
⑫ Boulder, state of Colorado

U.S.A

⑬ State of Queensland

Australia

● Organization Chart



● Present Number of Students

As of May 5, 2012

		First Year		Second Year		Third Year		Fourth Year		Total	
		Admission Capacity	Present Number	Admission Capacity	Present Number	Admission Capacity	Present Number	Admission Capacity	Present Number	Admission Capacity	Present Number
Graduate School of Human Life Sciences	Food and Nutritional Sciences Major	5	9	5	6	—	—	—	—	10	15
	Department of Early Childhood Care and Education	150	165	150	174	160	164	—	—	460	503
Faculty of Human Life (established in FY2011)	Department of Elementary Education	50	61	50	86	50	87	—	—	150	234
	Department of Human Developmental Psychology	100	129	100	141	105	133	—	—	305	403
	Department of Food and Nutrition	120	127	120	138	130	129	—	—	370	394
	Department of Human Welfare	60	84	60	59	65	51	—	—	185	194
	Department of Career Planning and Information Studies	100	104	100	87	105	141	—	—	305	332
	Department of Media Communication Studies	100	61	100	85	105	108	—	—	305	254
Faculty of Human Life (stopped accepting applicants in FY2011)	Department of Child and Early Childhood Care and Education	—	—	—	—	—	—	190	219	190	219
	Department of Human Developmental Psychology	—	—	—	—	—	—	95	105	95	105
	Department of Food and Nutrition	—	—	—	—	—	—	130	132	130	132
	Department of Human Welfare	—	—	—	—	—	—	65	41	65	41
Faculty of Social and Information Science (stopped accepting applicants in FY2011)	Department of Social and Information Science	—	—	—	—	—	—	125	157	125	157
	Department of Communication Studies	—	—	—	—	—	—	115	148	115	148
Junior College	Department of Culture and Communication (established in FY2012)	140	62	140	78	—	—	—	—	280	140
	Department of Japanese Language (stopped accepting applicants in FY2012)	—	—	—	17	—	—	—	—	—	17
Intensive Japanese Language Program		100	27	—	—	—	—	—	—	80	27
Senior High School		368	304	368	341	368	306	—	—	1,104	951
Junior High School		240	192	240	250	240	253	—	—	720	695
Kindergarten		70	55	70	53	70	56	—	—	210	164
Total		1,583	1,380	1,503	1,515	1,398	1,428	720	802	5,204	5,125

● Number of the Board Members

Trustees	9
Councilors	36
Auditors	2
Total	47

● Number of Faculty Members

	University	Junior College	Senior High School	Junior High School	Kindergarten	Total
Teaching Staff	124	12	56	41	13	246
Staff	80	7	15	6	1	109
Total	204	19	71	47	14	355

● Club Activities

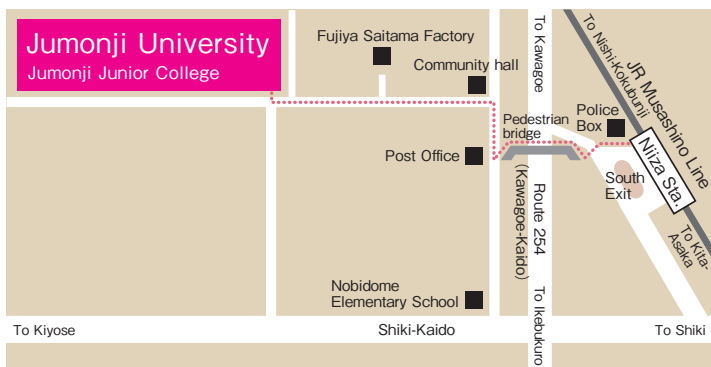
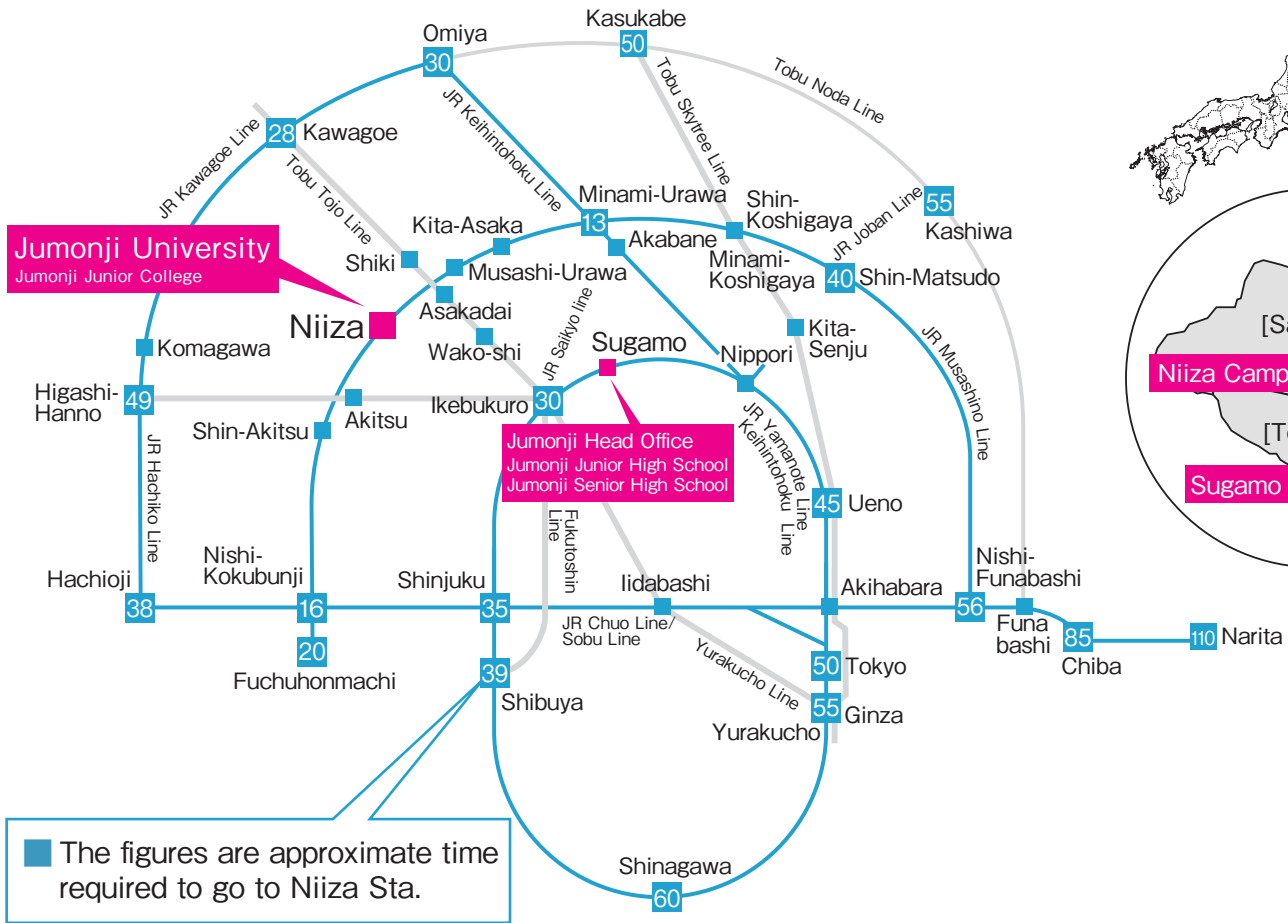
<University / Junior College>



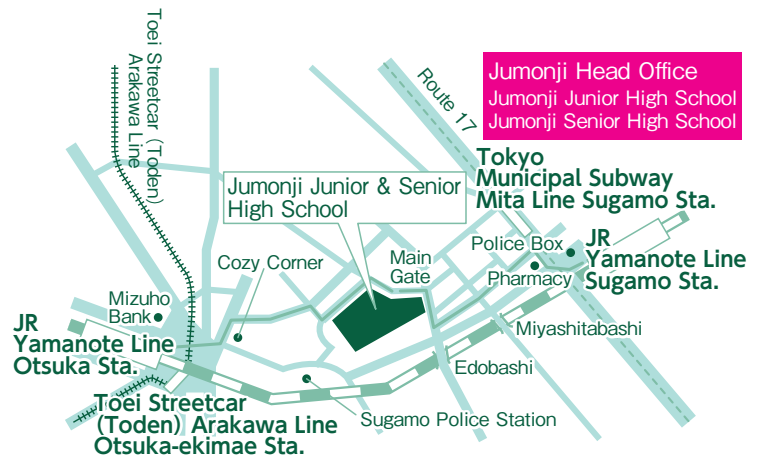
<Junior & Senior High School>



Access



- 8-minute walk from “Niiza Sta.” on JR Musashino Line
- Take Seibu Ikebukuro Line to “Akitsu Sta.” → JR Musashino Line from “Shin Akitsu Sta.” to “Niiza Sta.” → Approx. 8-minute walk
- Take Tobu Tojo Line to “Asakadai Sta.” directly connected with Tokyu Toyoko Line, Tokyo Metro Fukutoshin Line and Yurakucho Line → JR Musashino Line from “Kita Asaka Sta.” to “Niiza Sta.” → Approx. 8-minute walk



Convenient location accessible from 4 stations

- Sugamo Sta./Otsuka Sta. on JR Yamanote Line
- Sugamo Sta. on Tokyo Municipal Subway Mita Line
- Otsuka Sta. on Toei Streetcar (Toden) Arakawa Line

Approx.
5-minute
walk from
every station

Get off at **Sugamo Sta.** → Cross at the cross walk on route 17 and go 20 m to the right → turn left just before **Sumitomo Mitsui Bank** and go approx. 200 m → turn right at **Edobashi Dori** and go approx. 100 m to our School

Go out **the north exit of Otsuka Sta.** and take a right → cross the road at the signal in front of **Cozy Corner** and turn left → turn right at the corner of **Nippon Rent-A-Car** and go uphill → turn right at **the park** → turn left at the end of road and go approx. 300 m to our School